

The background image is a monochromatic orange-tinted photograph of a modern interior space. In the foreground, a woman is sitting on a set of wide, low steps, gesturing with her hand. To her right, a man is standing and talking on a mobile phone. Further back, another person is visible near a large window. On the right side, a man is standing next to a Kettler table tennis table. In the bottom left corner, there is a small table with a white rabbit figurine on it. The overall atmosphere is one of a contemporary, active living or working environment.

ACTIVATE

# ACTIVATE

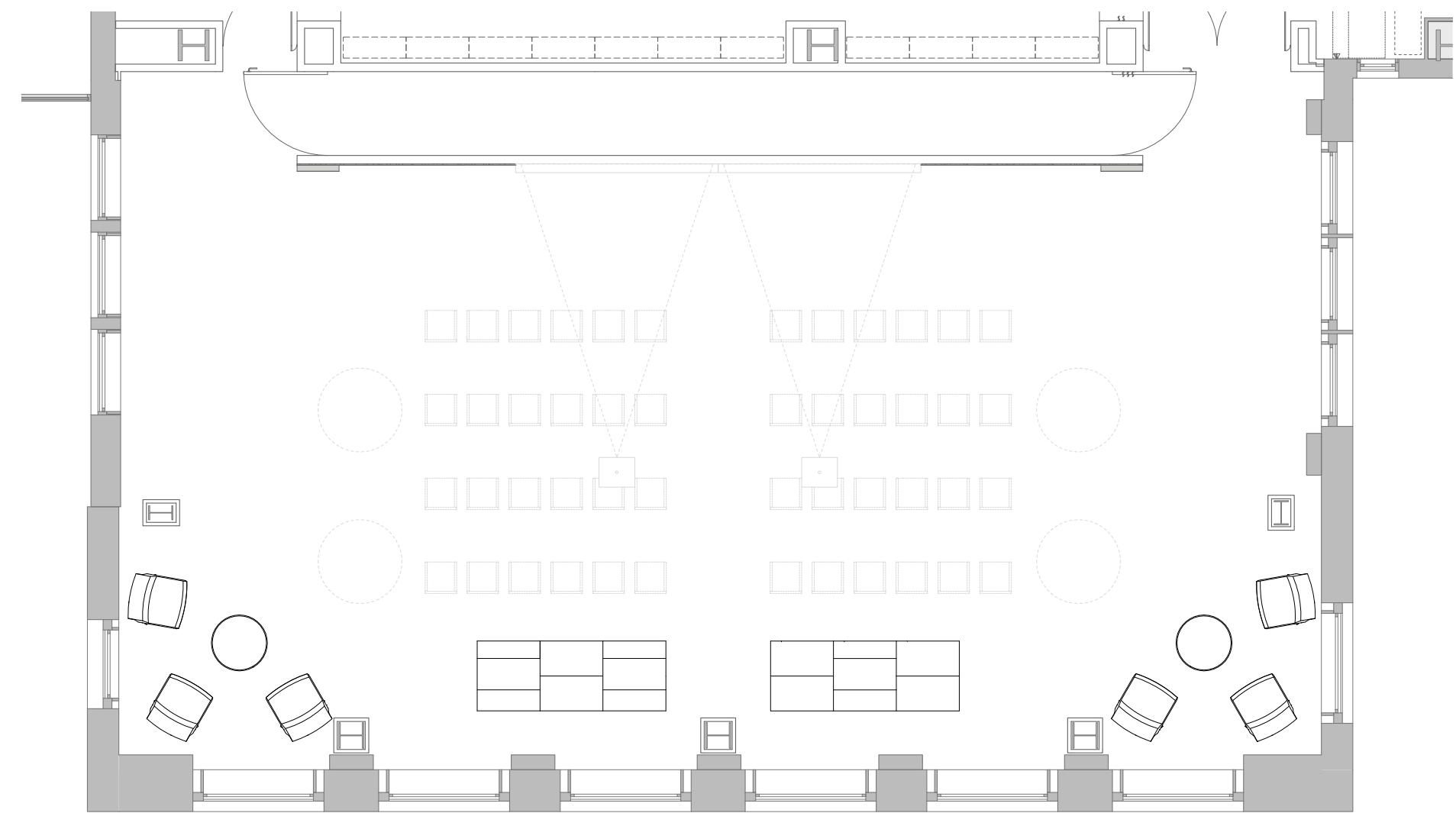
As an architectural firm relocating our office, we had the opportunity to design a new work space that has re-energized the spirits of the architects and designers and fosters cross-studio dialogue. Our 140-person office allows us to practice as a think-thank, promoting collaboration and inspiring innovation through direct human interaction. We are organized into three design studios of 20-40 architects, each led by three or four partners. This combines the intimacy of a small practice with the extensive resources of a major design firm.

## DESIGN PROBLEM

The Wilson Practice Room is a large multipurpose room which lacks a variety of furniture options necessary to support the wide range of activities that take place on a regular basis. The great room offers terrific views with great sunlight, yet it lacks comfortable and flexible seating options for use during weekly seminars, design workshops, all staff meetings, holiday parties and most importantly our annual sporting events such as Ping Pong and Donkey Ball.

## DESIGN SOLUTION

Adding flexible lounge seating to the existing stackable seminar chairs would provide a greater opportunity to use the space in a suitable and collaborative way. On quieter days it also addresses an office-wide need to add more lounge seating clusters for both individual and small group use. Increasing the flexible soft seating locations activates unused areas on levels, whether you are taking a lunch break to sitting on the sidelines. Additionally, the space is used by small groups that require a more intimate seating arrangement and flexibility.



Wilson Practice Room Floor Plan



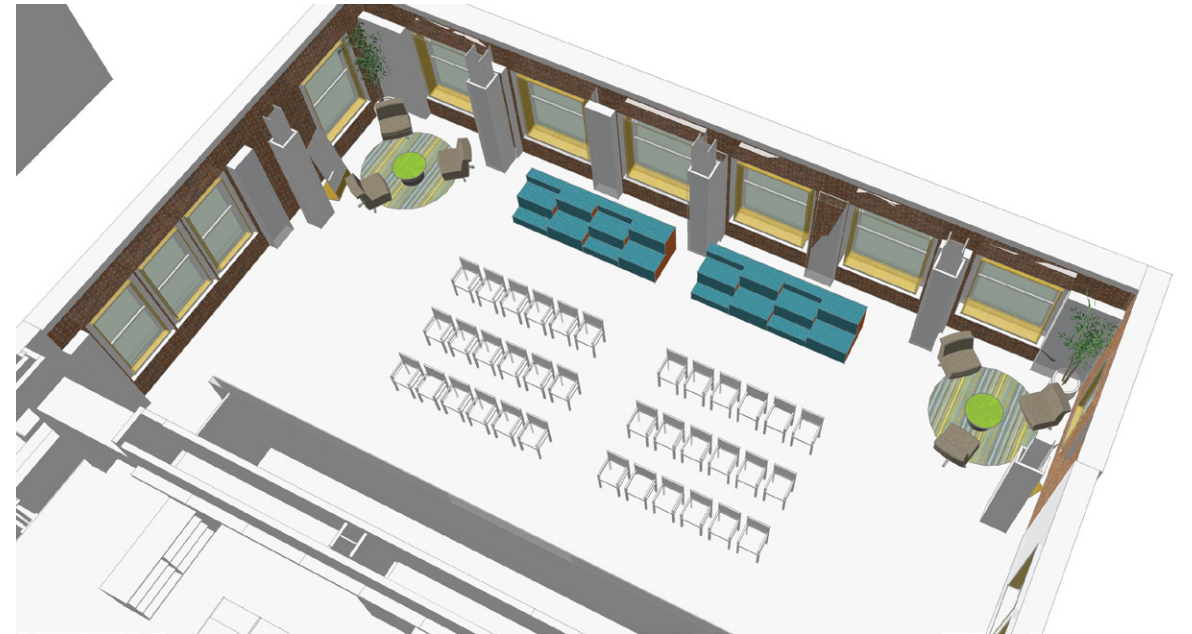


“ The office could use a **comfortable and informal lounge** for break-out discussions or having lunch. ”

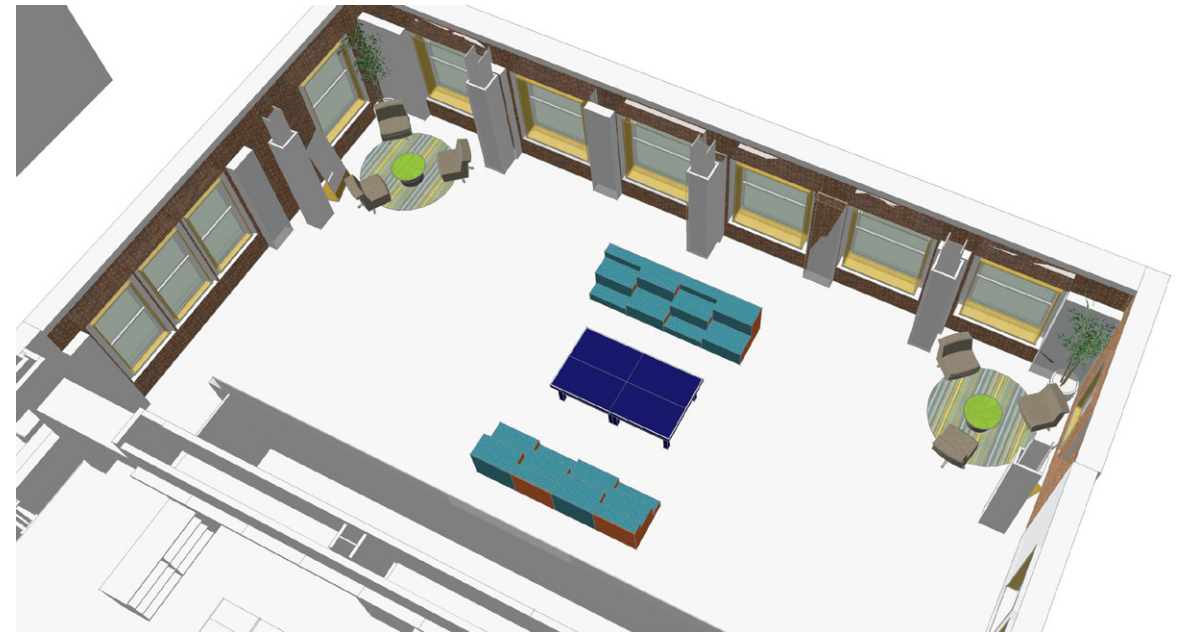
2012 OFFICE SURVEY

“ The formality of all the workstations needs to be offset with clusters of **flexible soft seating**. ”

2012 OFFICE SURVEY

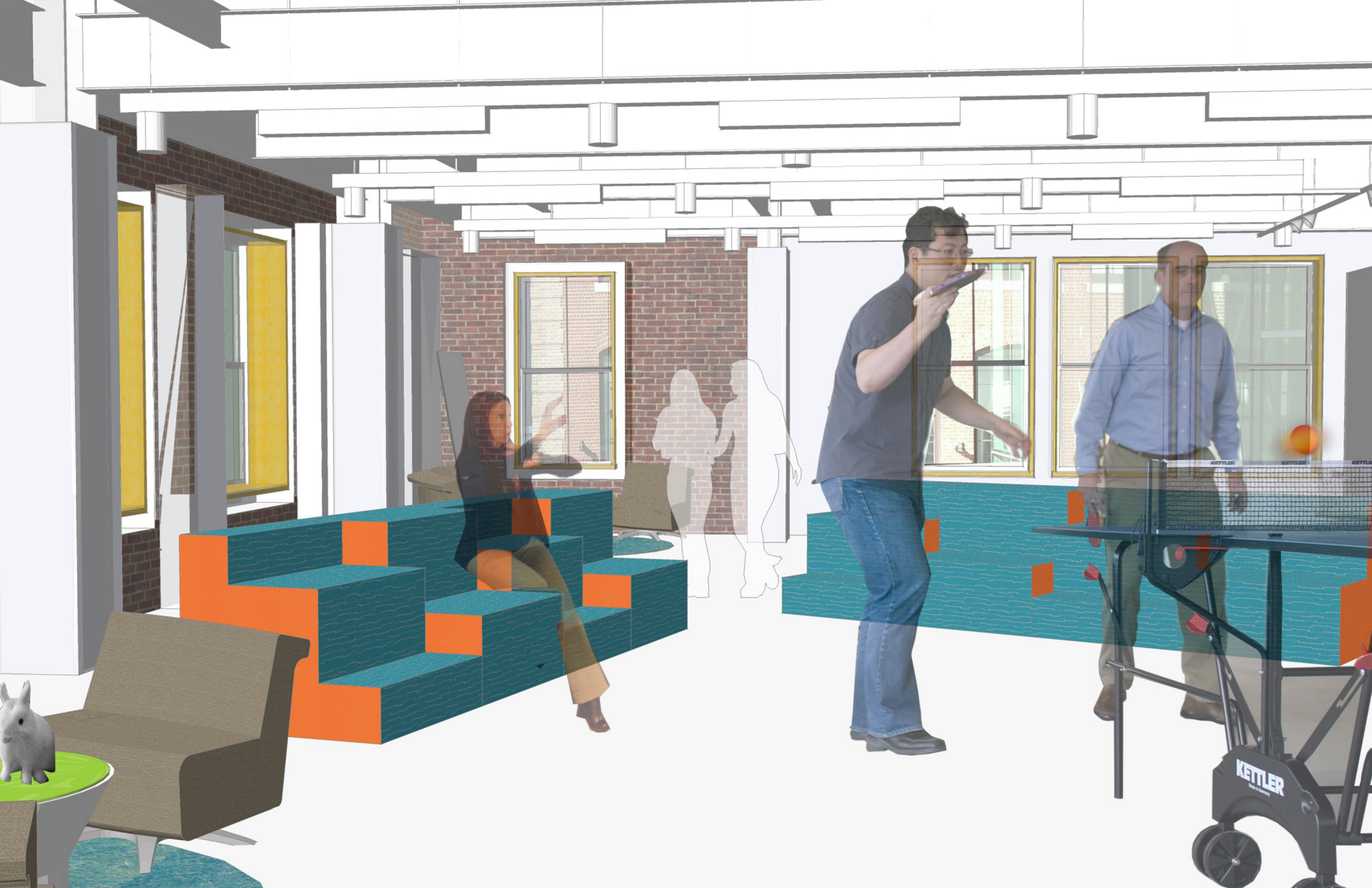


View of a “meeting” style setup in the Wilson Practice Room



View of a ping-pong game, social setup in the Wilson Practice Room







“It would be nice to have **lounge furniture** to sit in when taking books out of the library or reading periodicals.”

2012 OFFICE SURVEY



“The floor plan could use a **living room environment** in areas such as the raised platform or Wilson Practice Room.”

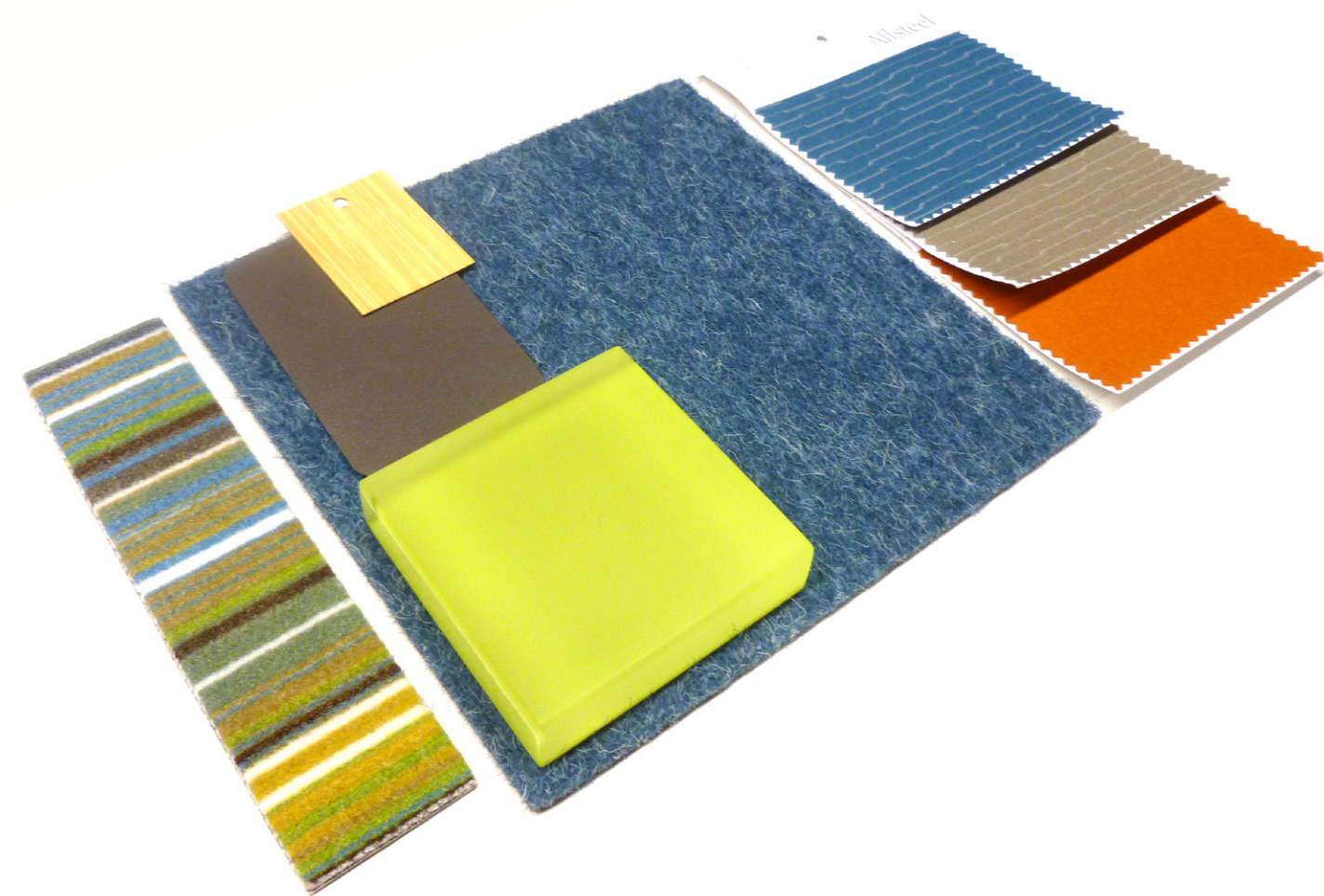
2012 OFFICE SURVEY





ACTIVATE — MATERIALS PALETTE

“The space would benefit from **carpeting**  
**and upholstery** to absorb the acoustics.”



*The Wilson Practice Room is a raw architectural space with polished concrete floors, an exposed ceiling and exposed brick from the original historic façade. We chose to reflect the active, often kinetic use of this room with bold hues of blue, orange, and green. The carpet selection could be both textural and multicolored to add to the inviting environment we hope to create with the Gather furniture components.*